

Ronald Reagan Presidential Library
Digital Library Collections

This is a PDF of a folder from our textual
collections.

Collection: President, Office of the: Presidential
Briefing Papers: Records, 1981-1989
Folder Title:08/11/1982 (Case File: 095341)
Box: 20

To see more digitized collections visit:
<https://reaganlibrary.gov/archives/digital-library>
To see all Ronald Reagan Presidential Library
inventories visit:
<https://reaganlibrary.gov/document-collection>

Contact a reference archivist at:
reagan.library@nara.gov

Citation Guidelines: <https://reaganlibrary.gov/citing>

WITHDRAWAL SHEET

Ronald Reagan Library

Collection Name PRESIDENT, OFFICE OF THE: PRESIDENTIAL BRIEFING PAPERS

Withdrawer

RBW 12/20/2007

File Folder 08/11/1982 (CASEFILE 095341)

FOIA

S07-0077/01

Box Number

106

DOC NO	Doc Type	Document Description	No of Pages	Doc Date	Restrictions
1	SCHEDULE	RE. TRIP OF RR TO BILLINGS, MONTANA [PG. 1, PARTIAL]	1	8/10/1982	B7(C)
2	DIAGRAM	RE. MARINE ONE AND AIR FORCE ONE	2	8/11/1982	B2 B7(E)

Freedom of Information Act - [5 U.S.C. 552(b)]

- B-1 National security classified information [(b)(1) of the FOIA]
- B-2 Release would disclose internal personnel rules and practices of an agency [(b)(2) of the FOIA]
- B-3 Release would violate a Federal statute [(b)(3) of the FOIA]
- B-4 Release would disclose trade secrets or confidential or financial information [(b)(4) of the FOIA]
- B-6 Release would constitute a clearly unwarranted invasion of personal privacy [(b)(6) of the FOIA]
- B-7 Release would disclose information compiled for law enforcement purposes [(b)(7) of the FOIA]
- B-8 Release would disclose information concerning the regulation of financial institutions [(b)(8) of the FOIA]
- B-9 Release would disclose geological or geophysical information concerning wells [(b)(9) of the FOIA]

C. Closed in accordance with restrictions contained in donor's deed of gift.

88

WHITE HOUSE
OFFICE OF RECORDS MANAGEMENT
WORKSHEET

- X - MEDIA
- H - INTERNAL

Name of Document: BRIEFING PAPERS FOR
PRESIDENT'S SCHEDULED
APPOINTMENTS FOR AUG 11 82

Subject Codes:
PR 007.01

1) Subject: Schedule for trip to Billings,
Montana.

TR 053.

2) Interview with HUGH SIDNEY,
correspondent for Time
magazine.

PR 016.

PU

3) Memorandum regarding
Montana political situation.

ST 026.

PL

4) Meeting with Representative ROX
MARLENEE regarding House/
Senate conference tax
legislation.

LE

F1 010.02

F1 004!

5) Billings Centennial celebration
and fundraising events for
Larry Williams, Republican
nominee for Senate.

PL 002

PL 005.04

ROUTE TO:

ACTION

DISPOSITION

Office/Agency (Staff Name)	Action Code	Tracking Date YY/MM/DD	Type of Response	Code	Completion Date YY/MM/DD
RMMATT	RSZ	1/1			1/1

Referral Note:

UNPUBLISHED
August 10, 1982
5:00 pm

THE WHITE HOUSE

WASHINGTON

THE PRESIDENT'S SCHEDULE
Wednesday, August 11, 1982

8:55 am	<u>Depart South Grounds for trip to Billings, Montana (see separate schedule) (Stephen Studdert)</u>	South Grounds
	(TAB A - Trip Schedule)	
Enroute	<u>Interview with Hugh Sidey (Larry Speakes)</u>	Air Force One
	(TAB B)	
7:55 pm	<u>Return to the White House</u>	South Grounds

SUPPLEMENTARY BRIEFING MATERIALS

TAB C - Montana Political Overview (Rollins)

TAB D - Members of Congress Traveling with the President (Duberstein)

TAB E - Briefing Paper for Billings Centennial Celebration and
Fundraiser for Larry Williams (Rollins)

THE WHITE HOUSE

WASHINGTON

SCHEDULE OF THE PRESIDENT

Wednesday, August 11, 1982 - Washington/Billings/Washington

EVENTS: 1) Billings Centennial Celebration
2) Drop-by Major Donors Reception for Larry Williams
for U.S. Senate campaign
3) Fundraising luncheon for Larry Williams for U.S.
Senate campaign
DRESS: Men's Business Suit
WEATHER: Mid 80's; Partly Cloudy; 20% Chance of Precipitation

8:55 a.m. Marine One departs White House en route Andrews
AFB. Flight Time: 15 mins. - Photo Coverage

9:15 a.m. Air Force One departs Andrews AFB en route Billings,
EDT Montana. - Open Press

Flight Time: 3 hrs. 45 mins.

Time Change: - 2 hrs.

Food Service: Breakfast

Guests Aboard:

Cong. Ron Marlenee (R-Montana)

Mrs. Cynthia Marlenee

Hugh Sidey, "Time" Correspondent

11:00 a.m. Air Force One arrives Billings-Logan Airport.
MDT - Open Press

Met by:

Governor Ted Schwinden (D-Montana)

William "Bill" Fox, Mayor of Billings

(R)

Larry Williams, U.S. Senate candidate

(R)

11:05 a.m. Depart via motorcade en route METRA Arena. Drive
Time: 5 mins. In Limo: Cong. Marlenee, Mayor Fox,
M. Deaver.

11:10 a.m. Arrive Arena and proceed inside to holding room.
- Closed press

11:15 a.m. Proceed to rear-stage to join Billings Centennial
Parade.

08/10/82 10:00 a.m.

Board Wells Fargo stagecoach and proceed into arena.
Attendees: 10,000 - Open press

Announcement

11:25 a.m. Arrive at stage, deboard and proceed to seat on stage.

NOTE: On stage will be Mayor Fox,
Cong. Marlenee, Gov. Schwinden and Russ
Clark.

Introduction by Mayor Bill Fox.

11:30 a.m. Make remarks.

11:45 a.m. Conclude remarks and remain at podium to receive gift from the City of Billings presented by Mayor Fox.

11:50 a.m. Proceed back stage and bid farewell to the Billings Centennial Committee.
Attendees: 8 - Official Photographer

Proceed to motorcade and board.

11:55 a.m. Depart via motorcade en route Billings Sheraton.
Drive Time: 5 mins. In Limo: Larry Williams,
M. Deaver.

12:00 noon Arrive and proceed to Skytop Room for Major Donors Reception for Larry Williams for U.S. Senate campaign. Attendees: 38 - Official Photographer

12:10 p.m. Conclude and proceed to Suite. PRIVATE TIME

12:30 p.m. Proceed to Sheraton Ballroom for Larry Williams for U.S. Senate fundraising luncheon. Attendees: 750.

12:35 p.m. Arrive off-stage announcement area and, following announcement, proceed to seat on dais and be seated.
- Expanded Pool

1:20 p.m. Introduction by Larry Williams.

1:30 p.m. Remarks.

1:40 p.m. Conclude remarks and proceed to Suite.
PRIVATE TIME

2:00 p.m. Proceed to motorcade and board.

2:05 p.m. Depart via motorcade en route Airport. Drive Time:
5 mins. In Limo: L. Williams, M. Deaver.

2:10 p.m. Arrive Airport and, accompanied by Larry Williams,
board Air Force One.

NOTE: At top of stairs, pause with
Larry Williams for photo coverage.
Larry Williams will then deplane.

2:15 p.m. Air Force One departs Billings, Montana en route
MDT Andrews AFB.

Flight Time: 3 hrs. 20 mins.
Time Change: + 2 hrs.
Food Service: Snacks/Dinner
Guests Aboard: Same as before

7:35 p.m. Air Force One arrives Andrews AFB.
EDT

7:40 p.m. Marine One departs Andrews AFB.

7:55 p.m. Marine One arrives South Lawn, The White House.

B

THE WHITE HOUSE

WASHINGTON

INTERVIEW WITH HUGH SIDEY - TIME

DATE: Wednesday, August 11, 1982
PLACE: Air Force One
TIME: Enroute Billings, Montana (20 min.)
FROM: Larry Speakes *S*

I. PURPOSE

To be interviewed by Hugh Sidey for a mood piece on the President's first 18 months in office.

II. BACKGROUND

Sidey will be interested in such things as how it is to deal with other leaders, traveling, living over the "store", recharging batteries, forming a picture of all the nation, keeping talented and powerful men together. He is not interested in current issues.

The column will be in next week's TIME.

III. PARTICIPANTS

The President
Hugh Sidey
Larry Speakes

IV. PRESS PLAN

White House photographer only

V. SEQUENCE OF EVENTS

Hugh Sidey will be brought to the President's cabin where there will be brief pleasantries before the interview begins.

NOTE: The President will want to mention Sandy Sidey, Hugh's daughter, who works in the Press Office, and will be riding the press plane for this trip.

C

THE WHITE HOUSE

WASHINGTON

August 10, 1982

MEMORANDUM FOR THE PRESIDENT

FROM: ED ROLLINS
SUBJECT: MONTANA - POLITICAL BRIEFING

I. SUMMARY

Republican U.S. Senate nominee Larry Williams is waging a formidable challenge to Democrat incumbent U.S. Senator John Melcher. Williams, an investment advisor and publisher, describes himself as a "fiscally responsible Republican," and he is a staunch advocate of the Administration's economic program. Williams has made significant progress in his campaign, attacking Melcher as a tool of special interest groups. Out-of-state political action committees have contributed 95% of Melcher's campaign funds. Williams has associated himself heavily with the President in his campaign media advertising. The purpose of this trip is to lend credibility to the Williams effort which should help close the gap in the polls.

Montana's two incumbent U.S. Congressmen, Democrat Pat Williams in the 1st District and Republican Ron Marlenee in the 2nd District, are both expected to win re-election this November.

The strong independent character which the West is noted for, is highly evident in Montana. In 1980 the Reagan-Bush ticket carried the state by a decisive 57% to 32% margin.

II. ELECTED OFFICIALS

GOVERNOR - Ted Schwinden - Democrat - Elected in 1980
SENATOR - John Melcher - Democrat - Elected in 1976
SENATOR - Max Baucus - Democrat - Elected in 1978
U.S. HOUSE OF REPRESENTATIVES - 1 Republican 1 Democrat
REPUBLICAN MEMBER - Ron Marlenee (2nd District)

III. THE STATE LEGISLATURE

UPPER HOUSE - 28 Republicans 22 Democrats
LOWER HOUSE - 57 Republicans 43 Democrats

IV. REPUBLICAN STATE PARTY OFFICIALS

REPUBLICAN STATE CHAIRMAN - Mrs. David (Aubyn) Curtis
REPUBLICAN NATIONAL COMMITTEEMAN - Jack Galt
REPUBLICAN NATIONAL COMMITTEEWOMAN - Mrs. Steven (Jean) Birch
REAGAN-BUSH STATE CHAIRMAN - Mrs. Jack (Louise) Galt

V. DISCUSSION

A. THE U.S. SENATE RACE - 1982

Republican U.S. Senate nominee Larry Williams is waging a formidable and highly effective challenge to freshman Democrat incumbent U.S. Senator John Melcher. If Williams is successful, he will become Montana's first Republican U.S. Senator in 30 years.

Williams, a third generation Montanan who was born and raised in Billings, is now a resident of Kalispell, in the northwest corner of the state. Williams is an investment advisor and publisher. He writes a monthly newsletter dealing with the stock

market, and has just recently finished his fourth successful book relating to business: How to Prosper in the Coming Good Years. In 1978, Williams was the Republican nominee in the U.S. Senate race to succeed Democrat incumbent Lee Metcalf. Although defeated by Democrat U.S. Congressman Max Baucus, Williams won 44% of the statewide vote. As state director of the National Taxpayers Union in 1979, Williams strongly advocated the passage of a balanced budget amendment to the United States Constitution. In 1980, Williams was the major advocate behind the adoption of "Initiative 86" which made Montana the first state to index its income tax brackets and deductions. Williams easily turned back a token challenge in this year's June 8 primary to win the Republican U.S. Senate nomination to face incumbent Democrat John Melcher.

Democrat Melcher won his first U.S. Senate term in 1976, defeating Republican Stanley Burger by a 64% to 36% margin. He succeeded four-term Democrat U.S. Senate veteran and former Majority Leader Mike Mansfield who now serves as Ambassador to Japan. Melcher won renomination in this year's Democrat primary with 68% of the vote over environmental activist Mike Bond.

The strength of the Williams challenge was verified by a Wirthlin DMI poll, conducted in late June, which showed the Republican trailing Melcher by only 11 points - a strong early showing for a candidate challenging an incumbent. Republican Secretary of State Jim Waltermire, a leading Republican activist in the state, has commented that "the President's visit to Montana on Williams' behalf should cut five points off Melcher's lead."

The National Conservative Political Action Committee (NCPAC)

has spent about \$120,000 over the past two years filling Montana's airwaves with blistering attacks on Melcher's Senate record. Although some of these attacks have been called "inaccurate distortions of Melcher's positions," and the NCPAC label itself is unpopular in Montana, Democrats and Republicans alike agree that this intensive advertising campaign has worked to undercut Melcher's support in the state. Williams has disavowed the NCPAC campaign against Melcher and is concentrating on the following issue which seems to have caught fire.

Montana typifies most of the West with its independent-minded spirit. The state's residents generally think "Montana first" in analyzing political issues. This common perception among Montanans has brought a strong adverse reaction to the publicized fact that 95% of the funds raised by Melcher's campaign have come from political action committees outside the state of Montana. Williams is hammering away at the theme "how can Melcher truly represent the people of Montana when he is beholden to so many interest groups outside the state." This theme seems to be having an affect on the Melcher campaign. In contrast, Williams has pledged not to accept any money from political action committees outside the state, and has vowed to wage a grassroots campaign financed by Montanans.

The Williams campaign is likely to spend about \$400,000, while Melcher will probably budget close to \$1 million. Although this disparity will give Melcher an edge in paid advertising, the Williams' campaign contends that the more money Melcher spends, the more it will perpetuate the outside funding issue.

Williams is also benefiting from his efforts to associate himself with the President's personal popularity in Montana. He stresses the fact that as a Republican Senator working with a Republican President, he can accomplish much more for Montana than a Democrat who is a member of the Senate Minority. Williams' campaign has posted billboards across the state picturing the President with a quote endorsing Williams saying, "I need him, Montana needs him."

A Presidential visit, coming at a time when Williams is already within striking distance of Melcher, will give his campaign an invaluable boost. The President's attendance at both the centennial celebration and the personal fundraising events for Williams will serve to demonstrate the seriousness and credibility of Williams' candidacy. Aided by this Presidential visit, Larry Williams is likely to enter the fall campaign as having one of the best chances of unseating an incumbent Democrat U.S. Senator this year.

B. U.S. HOUSE RACES - 1982

Republican incumbent U.S. Congressman Ron Marlenee is expected to win his fourth term in the U.S. House this November. Marlenee represents Montana's 2nd District which takes in the eastern two-thirds of the state including the cities of Billings and Great Falls. John Melcher, currently Montana's senior U.S. Senator, represented this district in the U.S. House for eight years before his election to the U.S. Senate in 1976. Marlenee's Democrat opponent this year is Howard Lyman, a rancher and farmer

from Great Falls. Marlenee won his 1980 race with 59% of the vote, and should win re-election without any major difficulty.

In the 1st Congressional District, Democrat incumbent U.S. Congressman Pat Williams is almost certain to win a third term over the Republican nominee, Bob Davies. Davies, a member of the John Birch Society, defeated anti-abortion activist Suzanne Morris in the June 8 primary. Democrat incumbent U.S. Senator Max Baucus represented this district for two terms before his election to the U.S. Senate in 1978. This district, which takes in the western part of the state, has traditionally been more Democrat than Montana's other Congressional district.

C. BILLINGS

Billings, with a population of 67,000, is the county seat of Yellowstone County and is the largest city in Montana. Billings was founded in 1882 when the Northern Pacific Railroad was laying tracks through this area, and it was named for the railroad company's president, Frederick Billings. The current mayor of Billings is Republican Bill Fox.

Billings is situated in south-central Montana. An energy boom -- coal, oil and gas extraction -- has made the Billings area the most prosperous region in the state. Yellowstone County has the highest concentration of Republicans in the state. In 1980, the Reagan-Bush ticket carried the county by a 58% to 32% margin.

VI. MISCELLANEOUS

POPULATION - 787,000

NICKNAME - Treasure State (Old)

"Big Sky" Country (New)

MOTTO - Gold and Silver

D

REPRESENTATIVE RON MARLENEE (R-MONTANA)

Ron Marlenee is a Republican from Montana's Second District (central and eastern part of the state, including Billings). Now serving in his third term, Ron is a member of the House Agriculture Committee and the House Committee on Interior and Insular Affairs. He serves as Ranking Republican Member of the Interior Subcommittee on Oversight and Investigations and the Agriculture Subcommittee on Forests, Family Farms and Energy. Ron is the only Republican Member of Montana's four-person Delegation to the House and Senate.

A farmer and rancher by profession, Ron has not been fully supportive of the Administration's agricultural policies--particularly with respect to wheat and feed grains. However, he views the recent Soviet grain sales decision as a step in the right direction; and he has been working actively to explain this decision in Montana in the most positive terms.

The reference to "contract sanctity" in the President's Des Moines Corn Growers' speech has been the subject of substantial discussion among domestic grain producers (they are for it). Ron joined other House Agriculture Committee Republicans last week in writing the President to seek clarification. Administration officials are scheduled to testify in the House Agriculture Committee on Wednesday, August 11th, 1982 on the grain sales issue, including "contract sanctity."

With respect to aggregate defense and economic policies, Ron has been a strong and consistent supporter of Administration initiatives. He is presently reported to be "leaning against" the tax bill, however; both on procedural grounds and on substance. It is felt that a direct appeal by the President--focusing on deficit reduction and interest rates--is necessary to convince Ron to change his position on the tax issue (suggested talking points attached).

Ron met with the President and other House Agriculture Committee Members on July 15, 1982 to discuss Soviet grain sales. He met with the President on November 4, 1981, in the Cabinet Room in conjunction with the Farm Bill; and he had a brief photo session with the President in the Oval Office on October 5, 1981. Ron also has attended a number of White House social events.

Governor Schwinden (D-Montana) is quoted in an August 7, 1982, article in the Great Falls, Montana Tribune as telling the State Democratic Platform Convention: "Marlenee can't find the time next week to join Montana's governor in welcoming our President to Billings--apparently because he's afraid to appear on the same platform." In actuality, Ron delayed slightly in responding to the invitation to accompany the President only until the House Floor schedule could be clarified. Ron is, and has been, delighted to be closely associated with the President, and he is anxious to convey this fact.

During the Billings trip, Ron is being accompanied by his wife, Cindy.

SUGGESTED TALKING POINTS FOR MEETING
WITH REPRESENTATIVE RON MARLENEE (R-MONTANA)

- I wanted to make sure that there was no misunderstanding about my support for the Senate-passed tax bill and spending reductions. We can improve this bill in conference, and I believe that it is imperative that we then pass it.

- Passing this conference report will help bring down interest rates, thus helping the real estate, auto and construction industries. These lower interest rates are the key to stimulating business recovery.

- Rather than imposing new taxes on working people, this bill tries to insure that everyone pays a fair share of the tax burden. More than three-fourths of the revenue raised comes from increased taxpayer compliance and the closing of tax loopholes.

- Prompt passage of the conference report assures retention of the third year of the tax cuts as well as the retention of indexing.

- There is an old saying that good policy makes the best politics. Lower interest rates and an improving economy will be the best political tonic possible. Can I count on your support?

E

THE WHITE HOUSE

WASHINGTON

August 10, 1982

MEMORANDUM FOR THE PRESIDENT

FROM: ED ROLLINS *ER*

SUBJECT: ATTENDANCE AT BILLINGS CENTENNIAL CELEBRATION AND
FUNDRAISING EVENTS FOR LARRY WILLIAMS,
REPUBLICAN U.S. SENATE NOMINEE
WEDNESDAY, AUGUST 11, 1982
BILLINGS, MONTANA

I. PURPOSE

The purpose of this trip is to lend credibility to the candidacy of Republican U.S. Senate nominee Larry Williams, and help generate financial support for his campaign effort.

II. BACKGROUND

Republican U.S. Senate nominee Larry Williams is waging a formidable challenge to Democrat incumbent U.S. Senator John Melcher. Williams is benefiting from his efforts to associate himself with the President's personal popularity in Montana. A Wirthlin DMI poll shows that Williams is already within striking distance of Melcher, and a Presidential visit at this time should help close the gap in the polls prior to the final two months of the campaign.

III. PARTICIPANTS

A. BILLINGS CENTENNIAL CELEBRATION

U.S. Congressman Ron Marlenee (Republican - 2nd District)

Governor Ted Schwinden (Democrat)

Billings Mayor Bill Fox (Republican)

Larry Williams (Republican U.S. Senate nominee)

8,000 - 10,000 people

B. RECEPTION FOR LARRY WILLIAMS

Larry Williams (Republican U.S. Senate nominee)

35 guests at \$1000 per person

C. FUNDRAISING LUNCHEON FOR LARRY WILLIAMS

Larry Williams (Republican U.S. Senate nominee)

700 guests at \$125 per person

IV. STAFF CONTACT

Paul Russo

V. PRESS PLAN

A. BILLINGS CENTENNIAL CELEBRATION

Open Press

B. RECEPTION FOR LARRY WILLIAMS

Closed Press

C. FUNDRAISING LUNCHEON FOR LARRY WILLIAMS

Expanded Local and National Press Pools

VI. SEQUENCE OF EVENTS

A. BILLINGS CENTENNIAL CELEBRATION

11:15a.m. The President arrives at Billings Centennial
Celebration (via stage coach)
Metra Arena
Billings, Montana

The President is introduced by Billings Mayor
Bill Fox

The President delivers remarks (15 minutes)

11:45a.m. The President concludes remarks, is presented with a
gift, and departs arena

B. RECEPTION FOR LARRY WILLIAMS

12:00noon The President arrives at fundraising reception
for Larry Williams
23rd Floor, Sheraton Hotel
Billings, Montana

Photographs are taken with reception attendees

12:20p.m. The President departs

C. FUNDRAISING LUNCHEON FOR LARRY WILLIAMS

12:30p.m. The President arrives at fundraising reception for
Larry Williams
Ballroom, Sheraton Hotel
Billings, Montana

Lunch is served

1:25p.m. The President is introduced by Larry Williams,
Republican nominee for U.S. Senate

1:30p.m. The President makes brief remarks

1:40p.m. The President concludes remarks and departs



**THE TRIP OF
THE PRESIDENT TO
BILLINGS, MONTANA**

Wednesday, August 11, 1982

WITHDRAWAL SHEET

Ronald Reagan Library

Collection Name

PRESIDENT, OFFICE OF THE: PRESIDENTIAL BRIEFING PAPERS

Withdrawer

RB 12/20/2007
W

File Folder

08/11/1982 (CASEFILE 095341)

FOIA

S07-0077/01

Box Number

106

DOC Document Type

NO Document Description

No of Doc Date Restric-
pages tions

1 SCHEDULE

1 8/10/1982 B7(C)

RE. TRIP OF RR TO BILLINGS, MONTANA [PG. 1,
PARTIAL]

Freedom of Information Act - [5 U.S.C. 552(b)]

B-1 National security classified information [(b)(1) of the FOIA]

B-2 Release would disclose internal personnel rules and practices of an agency [(b)(2) of the FOIA]

B-3 Release would violate a Federal statute [(b)(3) of the FOIA]

B-4 Release would disclose trade secrets or confidential or financial information [(b)(4) of the FOIA]

B-6 Release would constitute a clearly unwarranted invasion of personal privacy [(b)(6) of the FOIA]

B-7 Release would disclose information compiled for law enforcement purposes [(b)(7) of the FOIA]

B-8 Release would disclose information concerning the regulation of financial institutions [(b)(8) of the FOIA]

B-9 Release would disclose geological or geophysical information concerning wells [(b)(9) of the FOIA]

C. Closed in accordance with restrictions contained in donor's deed of gift.

THE WHITE HOUSE

WASHINGTON

TRIP OF THE PRESIDENT
TO
BILLINGS, MONTANA

WEDNESDAY, AUGUST 11, 1982

- EVENTS: (1) BILLINGS CENTENNIAL CELEBRATION
(2) DROP-BY MAJOR DONORS RECEPTION FOR LARRY WILLIAMS
FOR U.S. SENATE
(3) FUNDRAISING LUNCHEON FOR LARRY WILLIAMS FOR U.S.
SENATE

THE PRESIDENT'S PARTICIPATION

(1) Remarks

(2) Informal Remarks

(3) Remarks

WEATHER

Mid 80's

Partly Cloudy

20% Chance of Precipitation

DRESS

Men's Business Suit

ADVANCE

B7c MORRIS, DAN
LACOVEY, JACK
[REDACTED]
MILLAWAY, RAY

STAFF
PRESS
USSS
WHCA

CONTACT

BILLINGS SIGNAL: 406/256-1824
Presidential Advance Office: 202/456-7565

08/10/82 10:00 a.m.

THE WHITE HOUSE

WASHINGTON

SUMMARY SCHEDULE OF THE PRESIDENT

Wednesday, August 11, 1982

- 8:55 a.m. Marine One departs South Lawn.
- 9:10 a.m. Marine One arrives Andrews AFB.
- 9:15 a.m. Air Force One departs Andrews AFB en route Billings,
EDT Montana.
- 11:00 a.m. Air Force One arrives Billings-Logan Airport.
MDT
- 11:05 a.m. Motorcade departs en route METRA Arena.
- 11:10 a.m. Motorcade arrives METRA Arena.
- THE PRESIDENT proceeds to holding room.
- 11:15 a.m. THE PRESIDENT proceeds rear-stage to join Billings
Centennial Parade, boards Wells Fargo stagecoach
and proceeds into Arena.
- 11:30 a.m. THE PRESIDENT makes remarks.
- 11:45 a.m. THE PRESIDENT concludes remarks and receives gift
from the City of Billings.
- 11:55 a.m. Motorcade departs METRA Arena.
- 12:00 noon Motorcade arrives Billings Sheraton.
- THE PRESIDENT proceeds to Major Donors Reception for
Larry Williams for U.S. Senate campaign.
- 12:10 p.m. THE PRESIDENT concludes and proceeds to Suite.
- PRIVATE TIME: 20 mins.
- 12:30 p.m. THE PRESIDENT proceeds to Larry Williams for U.S.
Senate fundraising luncheon.

08/10/82 10:00 a.m.

Wednesday, August 11, 1982

SUMMARY SCHEDULE

Page 2

- 1:30 p.m. THE PRESIDENT makes remarks.
- 1:40 p.m. THE PRESIDENT concludes remarks and proceeds to Suite.
- PRIVATE TIME: 20 mins.
- 2:05 p.m. Motorcade departs Billings Sheraton.
- 2:10 p.m. Motorcade arrives Billings-Logan Airport.
- 2:15 p.m. Air Force One departs Billings, Montana en route
MDT Andrews Air Force Base.
- 7:35 p.m. Air Force One arrives Andrews Air Force Base.
EDT
- 7:40 p.m. Marine One departs Andrews Air Force Base.
- 7:55 p.m. Marine One arrives South Lawn, The White House.

08/10/82 10:00 a.m.

DETAILED SCHEDULE

7:15 a.m. Press plane check in at Andrews AFB.

8:00 a.m. Press plane departs Andrews AFB.

GUEST AND STAFF INSTRUCTIONS

8:15 a.m. Vans for staff not manifested on Marine One and requiring transportation to Andrews AFB depart West Basement. Board Air Force One immediately upon arrival.

8:45 a.m. Those with own transportation should be at Andrews AFB, Base Operations Building.

8:45 a.m. Those manifested on Marine One should proceed to South Lawn and board.

8:50 a.m. THE PRESIDENT proceeds to South Lawn for Marine One boarding.

PHOTO COVERAGE

See AIRCRAFT SEATING DIAGRAMS section for Marine One manifest.

8:55 a.m. Marine One departs The White House en route Andrews
EDT Air Force Base.

Flight Time: 15 mins.

9:10 a.m. Marine One arrives Andrews Air Force Base.

OPEN PRESS COVERAGE
CLOSED ARRIVAL

THE PRESIDENT boards Air Force One.

See AIRCRAFT SEATING DIAGRAMS section for Air Force One manifest.

9:15 a.m. Air Force One departs Andrews Air Force Base en
EDT route Billings, Montana.

Flight Time: 3 hrs. 45 mins.
Time Change: - 2 hrs.
Food Service: Breakfast

10:00 a.m. Press plane arrives Billings-Logan Airport.

11:00 a.m. Air Force One arrives Billings-Logan Airport.
MDT

See Tab A for diagram.

OPEN PRESS COVERAGE
CLOSED ARRIVAL

THE PRESIDENT deplanes.

Met by:

Governor Ted Schwinden (D-Montana)
William "Bill" Fox
Mayor of Billings (R)
Larry Williams, U.S. Senate candidate
(R)

GUEST AND STAFF INSTRUCTIONS

Proceed immediately to motorcade.

THE PRESIDENT, accompanied by Mayor Fox, proceeds to motorcade and boards.

11:05 a.m. THE PRESIDENT departs Billings-Logan Airport en route METRA Arena.

Drive Time: 5 mins.

MOTORCADE ASSIGNMENTS

<u>Lead</u>	D. Morris
<u>Spare</u>	L. Speakes W. Sittmann
<u>Limo</u>	THE PRESIDENT Cong. Marlenee Mayor Fox M. Deaver
<u>Follow-up</u>	
<u>Control</u>	M. McManus Dr. D. Ruge Military Aide
<u>Support</u>	S. Studdert F. Millner M. Evans
<u>Staff I</u>	Medic

08/10/82 10:00 a.m.

<u>Guest I</u>	L. Williams Mrs. Marlenee P. Russo
<u>Guest II</u>	Gov. Schwinden
<u>ID</u>	
<u>Camera I</u>	J. LaCovey
<u>Wire I</u>	
<u>Wire II</u>	
<u>Camera II</u>	
<u>Camera III</u>	
<u>Camera IV</u>	
<u>Press Van</u>	M. Weinberg
<u>Guest/Staff Van I</u>	All others
<u>WHCA</u>	
<u>Ambulance</u>	
<u>Tail</u>	

11:10 a.m. THE PRESIDENT arrives METRA Arena, loading dock, and proceeds to holding room.

See Tab B for diagram.

CLOSED PRESS COVERAGE
CLOSED ARRIVAL

NOTE: Mayor Fox proceeds directly into arena.

<p><u>GUEST AND STAFF INSTRUCTIONS</u></p> <p>Necessary staff only to accompany THE PRESIDENT. All others will be escorted to viewing area.</p>

11:15 a.m. THE PRESIDENT proceeds to rear-stage to join Billings Centennial Parade.

THE PRESIDENT boards Wells Fargo stagecoach and proceeds into arena.

Announcement (off-stage)

See Tab C for arena diagram.

Attendees: 10,000

OPEN PRESS COVERAGE

11:25 a.m. THE PRESIDENT arrives at stage area, deboards and proceeds to seat on stage.

Brief remarks and introduction of THE PRESIDENT by Mayor Bill Fox.

11:30 a.m. THE PRESIDENT makes remarks.

FULL PRESS COVERAGE

11:45 a.m. THE PRESIDENT concludes remarks and remains at podium to receive gift from the City of Billings presented by Mayor Fox.

GUEST AND STAFF INSTRUCTIONS

Proceed to motorcade for boarding.

11:50 a.m. THE PRESIDENT departs arena via back stage en route motorcade for boarding.

NOTE: THE PRESIDENT bids farewell to Billings Centennial Committee back stage. Attendees: 8

OFFICIAL PHOTOGRAPHER ONLY
CLOSED DEPARTURE

11:55 a.m. THE PRESIDENT departs METRA Arena en route Billings Sheraton.

Drive Time: 5 mins.

MOTORCADE ASSIGNMENTS

Same as on arrival, with the exception of the following seat assignment changes:

<u>Limo</u>	THE PRESIDENT
	L. Williams
	M. Deaver

<u>Guest I</u>	Cong. Marlenee Mrs. Marlenee P. Russo
----------------	---

12:00 noon THE PRESIDENT, accompanied by Larry Williams, arrives Billings Sheraton, loading dock.

See Tab D for arrival diagram.

OFFICIAL PHOTOGRAPHER ONLY

GUEST AND STAFF INSTRUCTIONS

Necessary staff only to accompany THE PRESIDENT (NOTE: Necessary staff will be escorted to staff table in Ballroom).

All others will be escorted to 1st Floor for refreshments and holding during reception and luncheon.

THE PRESIDENT, accompanied by Larry Williams, proceeds to Skytop Room on 23rd Floor for brief reception with Major Donors to the Larry Williams for U.S. Senate Campaign.

OFFICIAL PHOTOGRAPHER ONLY

Attendees: 35
See Tab E for diagram.

12:10 p.m. THE PRESIDENT proceeds to Suite on 17th Floor.

PRIVATE TIME: 20 mins.

12:30 p.m. THE PRESIDENT departs en route Sheraton Ballroom for Larry Williams for U.S. Senate fundraising luncheon.

Attendees: 750

12:35 p.m. THE PRESIDENT arrives Sheraton Ballroom, off-stage announcement area.

Announcement (off-stage)

See Tab F for diagram.

EXPANDED PRESS POOL

THE PRESIDENT proceeds into Ballroom to seat on dais and is seated.

See Tab F-1 for dais seating.

Luncheon begins.

1:20 p.m. Larry Williams makes remarks and introduces THE PRESIDENT.

1:30 p.m. THE PRESIDENT makes remarks.

EXPANDED PRESS POOL

1:40 p.m. THE PRESIDENT concludes remarks and departs stage en route Suite.

GUEST AND STAFF INSTRUCTIONS

Necessary staff only to accompany THE PRESIDENT. All others will be escorted to motorcade for boarding.

1:45 p.m. THE PRESIDENT arrives Suite.

PRIVATE TIME: 15 mins.

2:00 p.m. THE PRESIDENT departs en route loading dock for motorcade boarding.

2:05 p.m. THE PRESIDENT departs Billings Sheraton en route Billings-Logan Airport.

Drive Time: 5 mins.

MOTORCADE ASSIGNMENTS

Same as previous motorcade.

2:10 p.m. THE PRESIDENT, accompanied by Larry Williams, arrives Billings-Logan Airport and boards Air Force One.

NOTE: Larry Williams accompanies THE PRESIDENT to the top of Air Force One stairs for photo coverage, then deplanes.

GUEST AND STAFF INSTRUCTIONS

Guests and staff will hold until photo is completed and will then board Air Force One.

See AIRCRAFT SEATING DIAGRAMS section
for Air Force One manifest.

2:15 p.m. Air Force One departs Billings, Montana en route
MDT Washington, D.C.

Flight Time: 3 hrs. 20 mins.
Time Change: + 2 hrs.
Food Service: Snacks/Dinner

2:45 p.m.* Press plane departs Billings, Montana
MDT en route Washinton, D.C.

7:35 p.m. Air Force One arrives Andrews Air Force Base.
EDT

THE PRESIDENT boards Marine One.

GUEST AND STAFF INSTRUCTIONS

Those manifested on Marine One should board immediately. All others will be provided transportation to The White House.

See AIRCRAFT SEATING DIAGRAMS section
for Marine One manifest.

7:40 p.m. Marine One departs Andrews Air Force Base en route
The White House.

Flight Time: 15 mins.

7:55 p.m. Marine One arrives South Lawn, The White House.

PHOTO COVERAGE

8:05 p.m.* Press plane arrives Andrews AFB.
EDT

* Denotes approximate time.

AIRCRAFT SEATING
DIAGRAMS

WITHDRAWAL SHEET

Ronald Reagan Library

Collection Name

PRESIDENT, OFFICE OF THE: PRESIDENTIAL BRIEFING PAPERS

Withdrawer

RB 12/20/2007
W

File Folder

08/11/1982 (CASEFILE 095341)

FOIA

S07-0077/01

Box Number

106

DOC Document Type

NO Document Description

No of Doc Date Restric-
pages tions

2	DIAGRAM	2	8/11/1982	B2
	RE. MARINE ONE AND AIR FORCE ONE			B7(E)

Freedom of Information Act - [5 U.S.C. 552(b)]

B-1 National security classified information [(b)(1) of the FOIA]

B-2 Release would disclose internal personnel rules and practices of an agency [(b)(2) of the FOIA]

B-3 Release would violate a Federal statute [(b)(3) of the FOIA]

B-4 Release would disclose trade secrets or confidential or financial information [(b)(4) of the FOIA]

B-6 Release would constitute a clearly unwarranted invasion of personal privacy [(b)(6) of the FOIA]

B-7 Release would disclose information compiled for law enforcement purposes [(b)(7) of the FOIA]

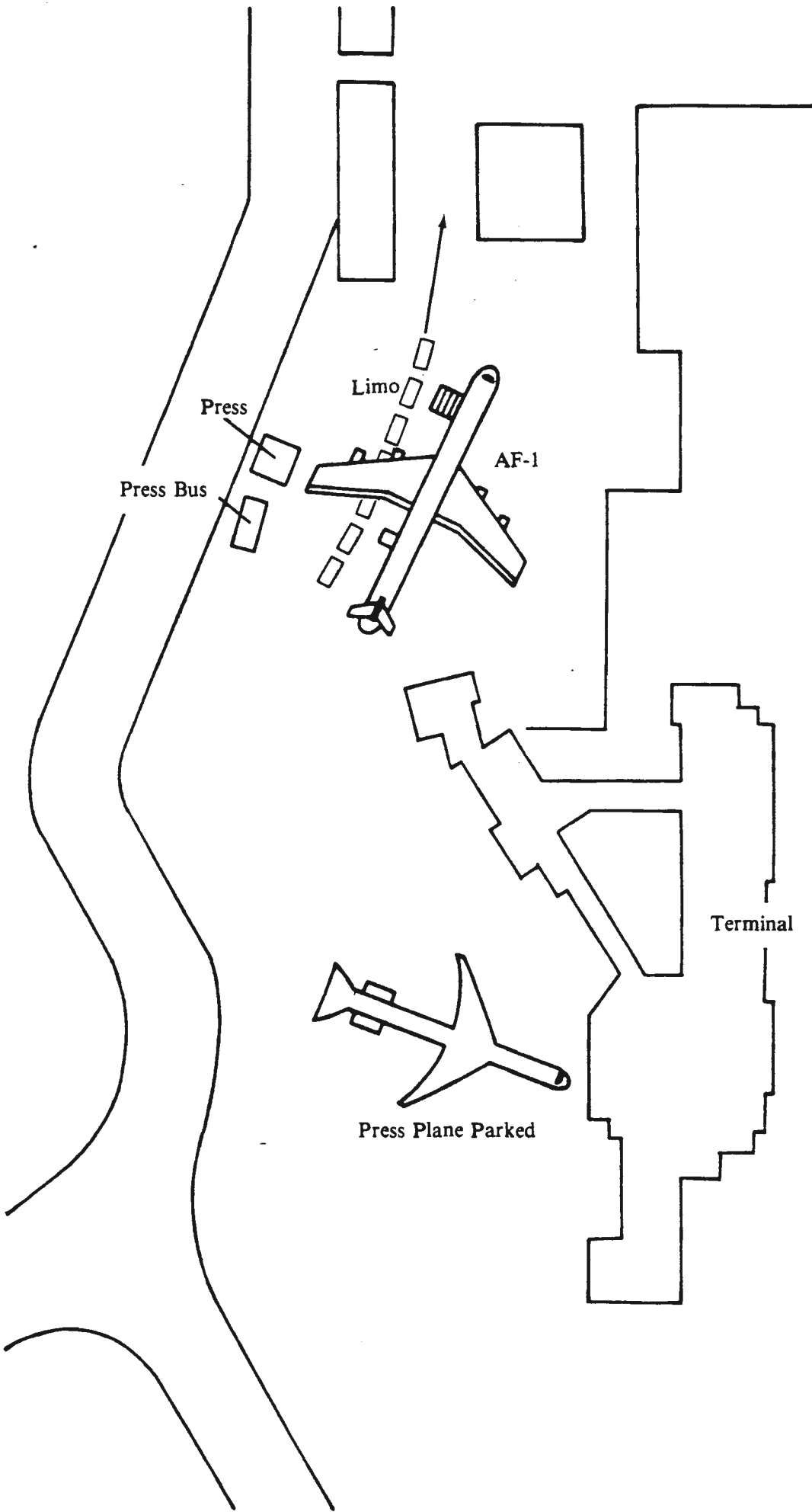
B-8 Release would disclose information concerning the regulation of financial institutions [(b)(8) of the FOIA]

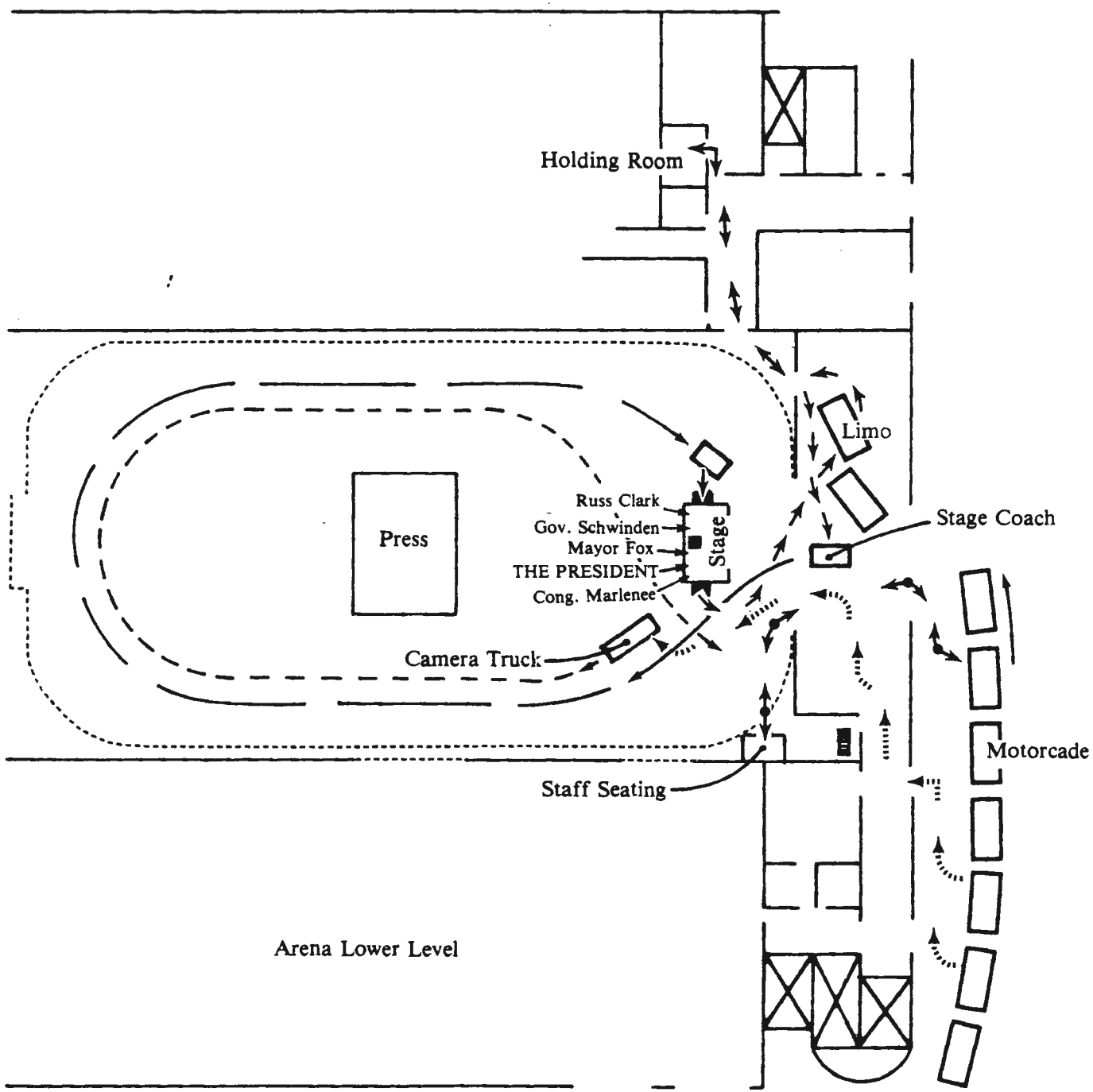
B-9 Release would disclose geological or geophysical information concerning wells [(b)(9) of the FOIA]

C. Closed in accordance with restrictions contained in donor's deed of gift.

TABS

TAB A
BILLINGS, MONTANA
Wednesday, August 11, 1982
Billings-Logan Airport
Airport Diagram

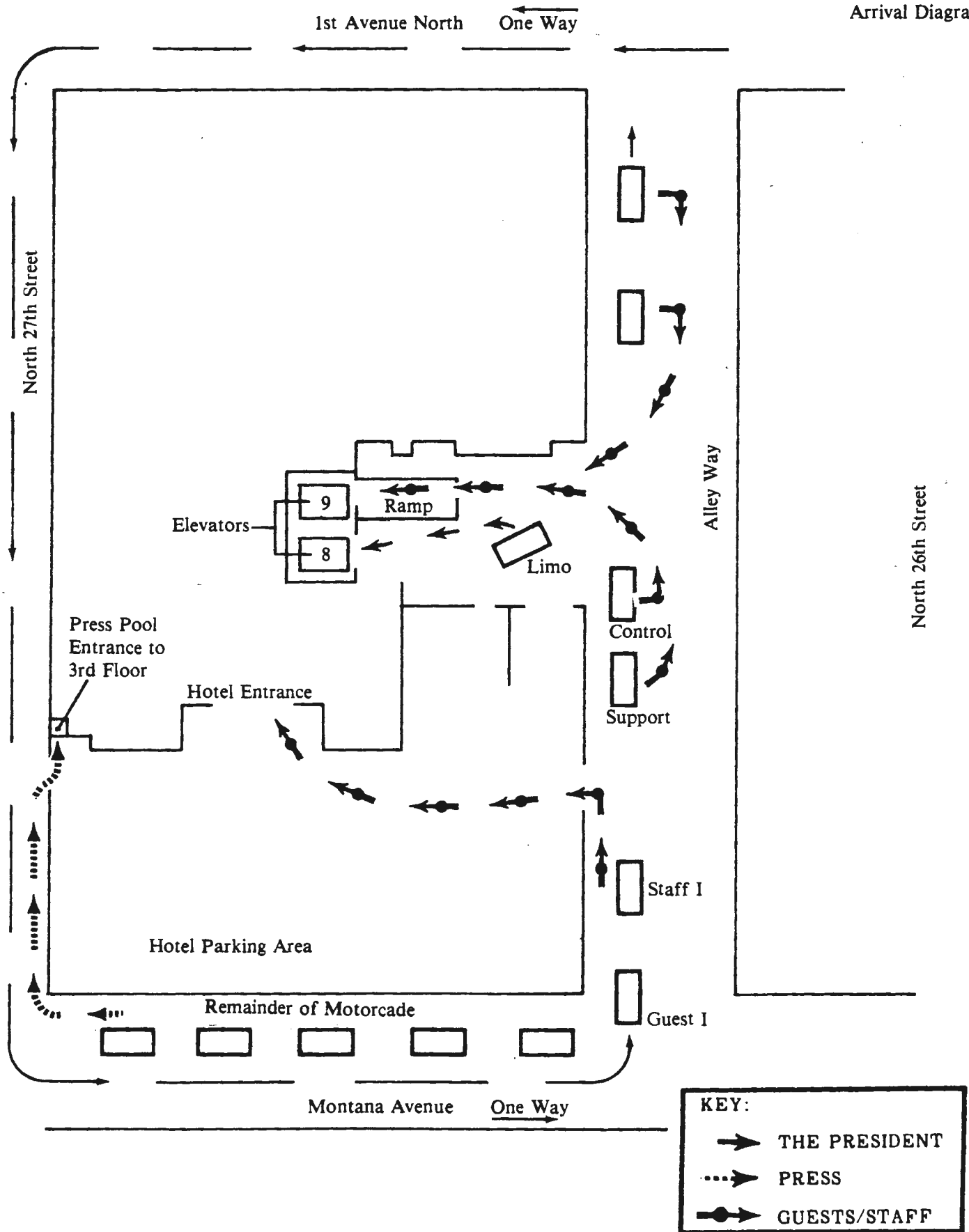




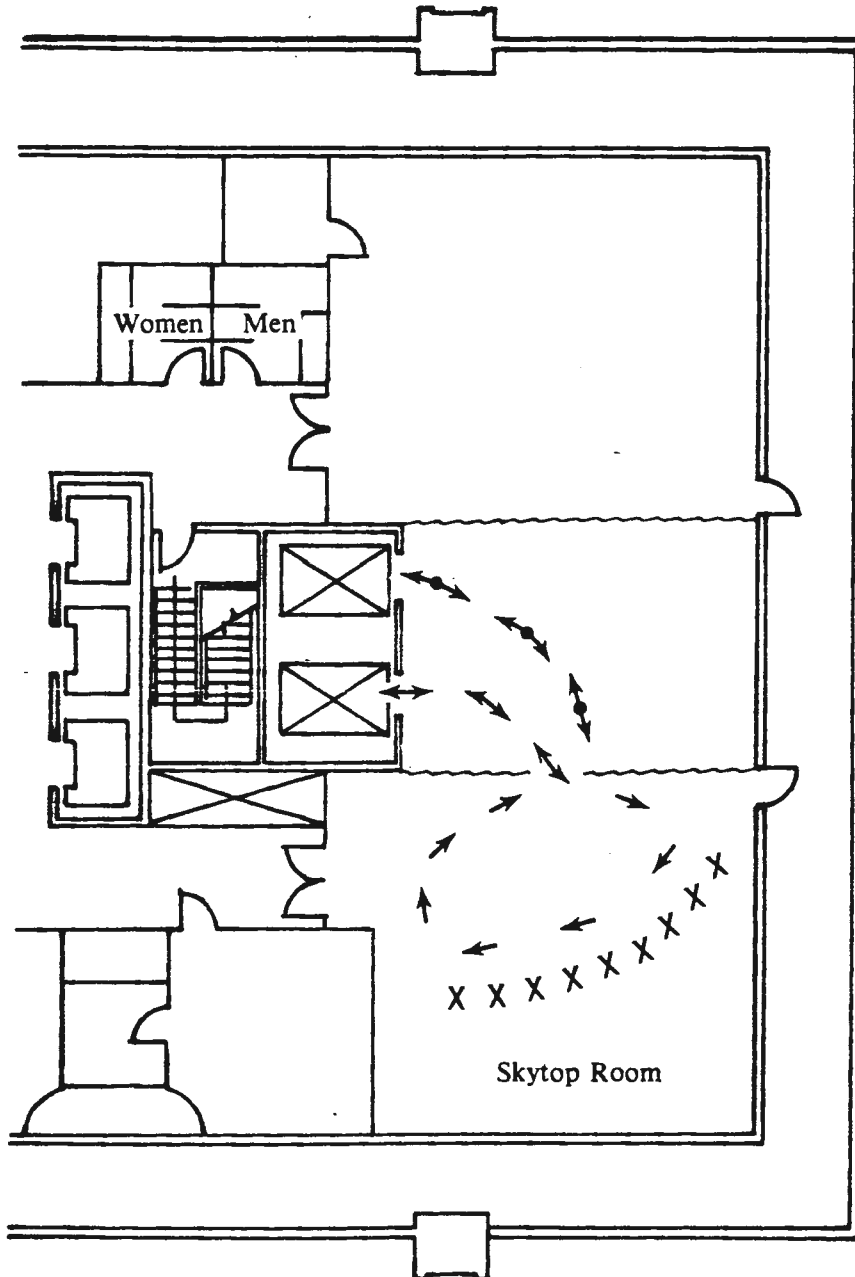
Arena Lower Level

KEY:

- THE PRESIDENT
-→ PRESS
- GUESTS/STAFF



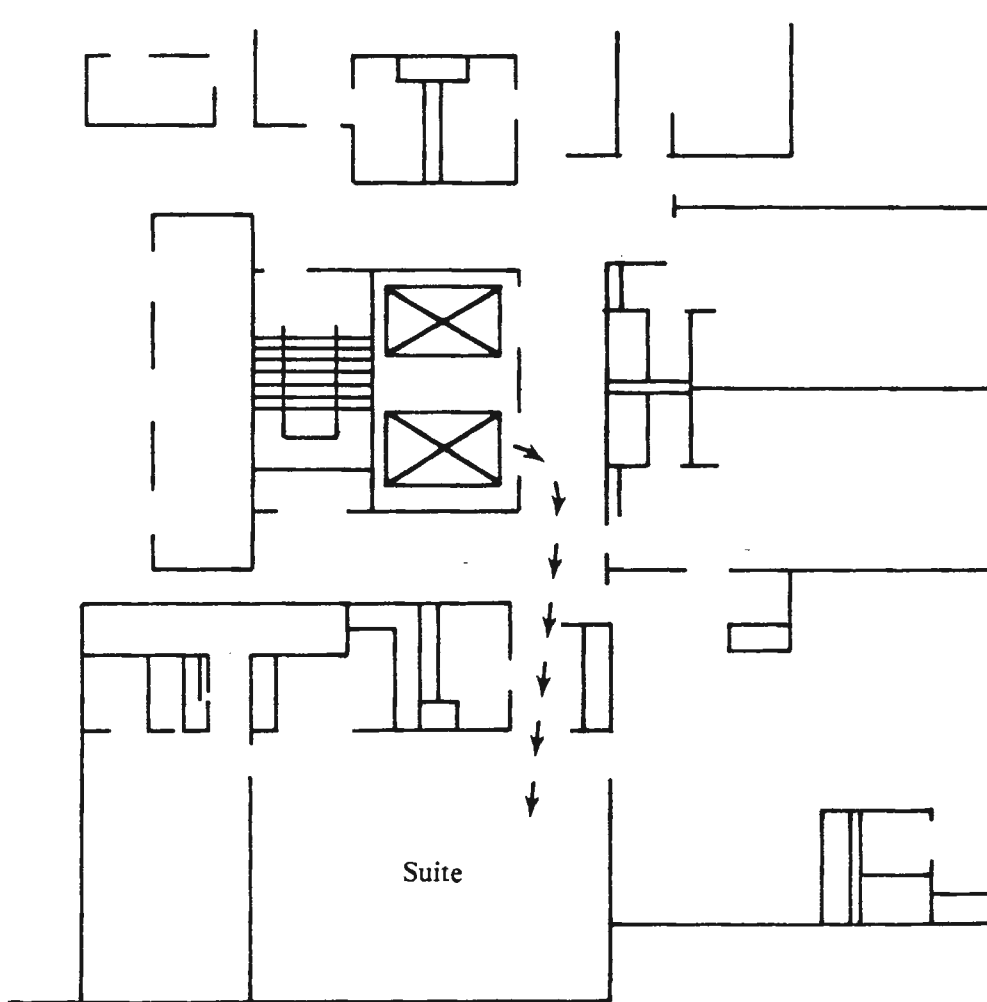
TAB D
BILLINGS, MONTANA
Wednesday, August 11, 1982
Sheraton Hotel
(Twenty-Third Floor)



KEY:

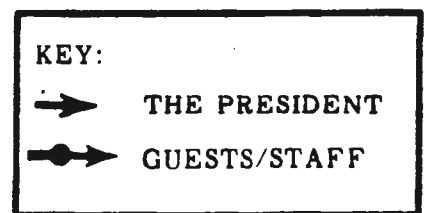
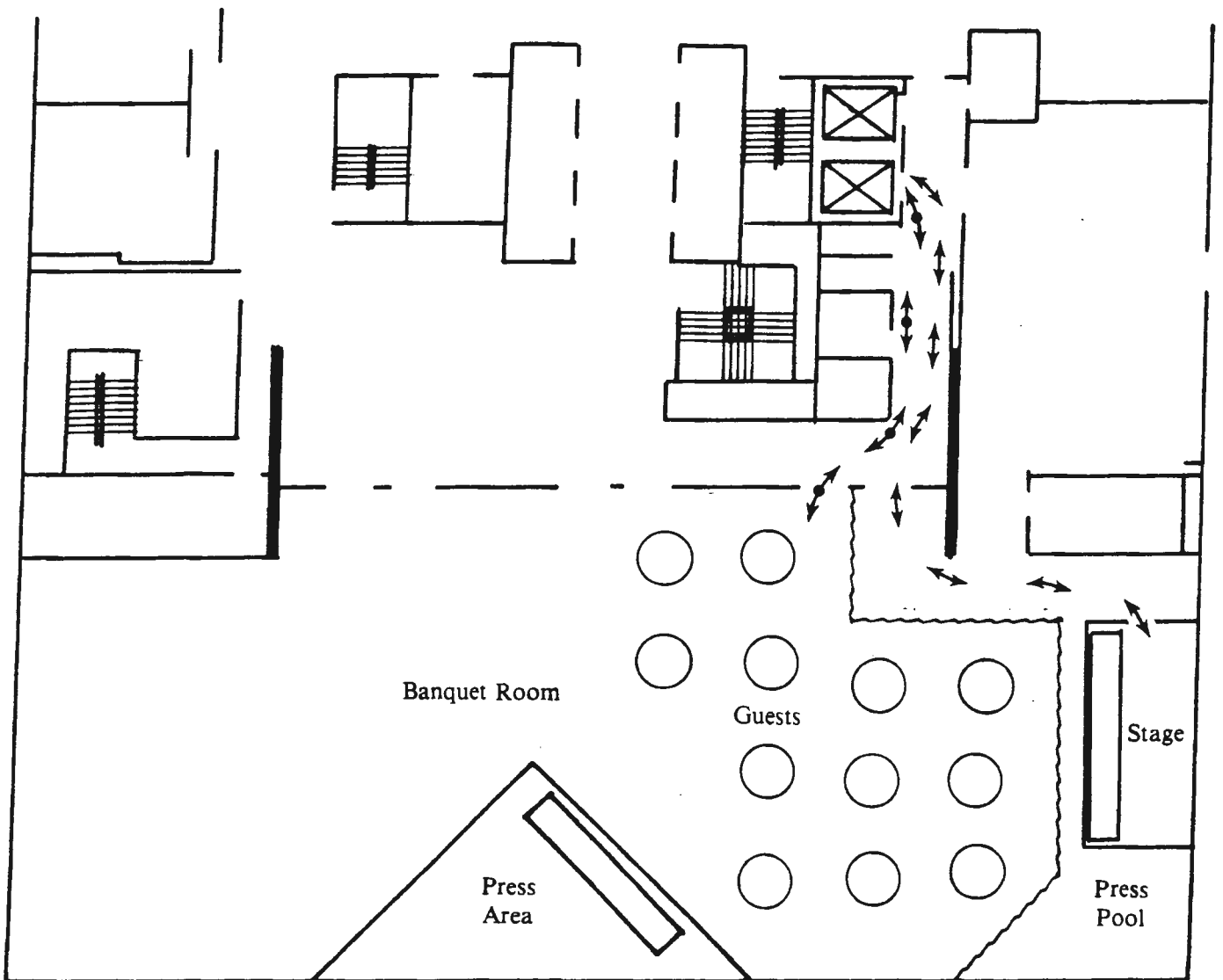
- THE PRESIDENT
- STAFF
- X GUESTS

TAB E
BILLINGS, MONTANA
Wednesday, August 11, 1982
Sheraton Hotel
(Seventeenth Floor)



KEY:
→ THE PRESIDENT

TAB F
BILLINGS, MONTANA
Wednesday, August 11, 1982
Sheraton Hotel
Sheraton Ballroom
(3rd Floor)



LARRY WILLIAMS FOR U.S. SENATE
 FUNDRAISING LUNCHEON

DAIS SEATING

- 1. Sylvia Williams
- 2. Richard Williams
- A 3. Bob Davies, Congressional Candidate, First District
- 4. Gov. Tim Babcock
- 5. Sen. Jack Galt, National Committeeman
- U 6. Jean Birch, National Committeewoman
- 7. Aubyn Curtiss, State Rep. and Chairman, Republican
 State Central Committee
- D 8. Harrison Fagg, State Rep. and House Majority Leader
- 9. Ed Argenbright, Superintendent of Public Instruction
- 10. Jim Waltermike, Secretary of State

I

P O D I U M

- 11. Larry Williams, U.S. Senate candidate
- E 12. THE PRESIDENT
- 13. Mrs. Carla Williams
- 14. Congressman Ron Marlenee
- N 15. Bob Marks, State Rep. and Speaker of the House
- 16. Walt Johnson, Vice-Chairman, Republican State Central
 Committee
- C 17. Ella MaeCromer, President, Montana Federation of
 Republican Women
- 18. Joe Boyd, Montana Reagan Committee
- E 19. Frank Whetstone, Montana Reagan Committee
- 20. Wilm Siems, Chairman, Yellowstone County Central
 Committee

